

Property For Lease

1426 Sens Rd. Suite #2 La Porte, TX. 77571



\$0.65 psf. monthly NNN

Property Description

5,300 s/f total space of which 500 s/f is office. Ready for occupancy, 16' eave height with (2) 12'x14' overhead doors, insulated shop, large offices, training/breakroom and two restrooms. The property is zoned Business Industrial with ample parking. The property is in a very desirable location with easy access to Houston Port Businesses. Both Barbour's Cut and Bayport container terminals are in very close proximity. Easy access to Hwy 225, Hwy 146, I-10 and Beltway 8. The property did not experience any flooding with Harvey. Located just west of Hwy 146 and south of Hwy 225

Property Highlights

- 5,300 total s/f available
- 500 s/f Office
- 16' Eave Height
- (2) 12'x14' Over Head Doors
- Concrete Parking
- Business Industrial Zoning
- Great Location
- Great Access to Hwy 225
- 2 miles to Barbour's Cut
- 7 miles to Bayport



Center Commercial
Real Estate Services

Greg Williams
281-386-8045
greg@ccreservices.com
www.ccreservices.com

The information contained herein has, we believe, been obtained from reliable sources and we have no reason to doubt the accuracy thereof. All such information is submitted, subject to errors, omissions or changes in condition prior to sale, lease or withdrawal without notice. All information contained herein should be verified by the person relying thereon. We have not made and will not make any warranty or representation as to the condition of the property nor the presence of any hazardous substances or any environmental or other conditions that may affect the value or suitability of the property.

Property For Lease

1426 Sens Rd. Suite #2 La Porte, TX. 77571



Center Commercial
Real Estate Services



Center Commercial
Real Estate Services

Greg Williams
281-386-8045
greg@ccreservices.com
www.ccreservices.com

The information contained herein has, we believe, been obtained from reliable sources and we have no reason to doubt the accuracy thereof. All such information is submitted, subject to errors, omissions or changes in condition prior to sale, lease or withdrawal without notice. All information contained herein should be verified by the person relying thereon. We have not made and will not make any warranty or representation as to the condition of the property nor the presence of any hazardous substances or any environmental or other conditions that may affect the value or suitability of the property.

Property For Lease

1426 Sens Rd. Suite #2 La Porte, TX. 77571



Center Commercial
Real Estate Services



Center Commercial
Real Estate Services

Greg Williams
281-386-8045
greg@ccreservices.com
www.ccreservices.com

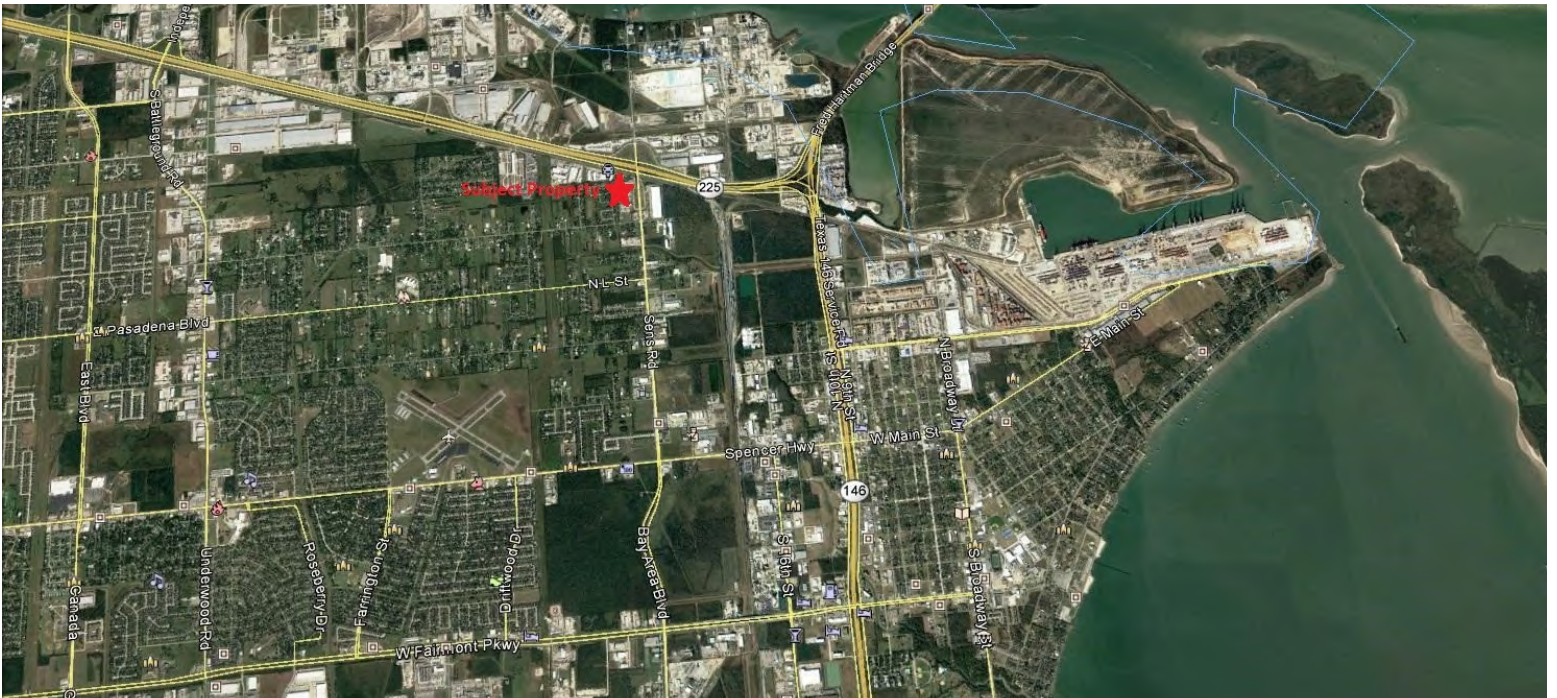
The information contained herein has, we believe, been obtained from reliable sources and we have no reason to doubt the accuracy thereof. All such information is submitted, subject to errors, omissions or changes in condition prior to sale, lease or withdrawal without notice. All information contained herein should be verified by the person relying thereon. We have not made and will not make any warranty or representation as to the condition of the property nor the presence of any hazardous substances or any environmental or other conditions that may affect the value or suitability of the property.

Property For Lease

1426 Sens Rd. Suite #2 La Porte, TX. 77571



Center Commercial
Real Estate Services



Center Commercial
Real Estate Services

Greg Williams
281-386-8045
greg@ccreservices.com
www.ccreservices.com

The information contained herein has, we believe, been obtained from reliable sources and we have no reason to doubt the accuracy thereof. All such information is submitted, subject to errors, omissions or changes in condition prior to sale, lease or withdrawal without notice. All information contained herein should be verified by the person relying thereon. We have not made and will not make any warranty or representation as to the condition of the property nor the presence of any hazardous substances or any environmental or other conditions that may affect the value or suitability of the property.

Information About Brokerage Services

Texas law requires all real estate license holders to give the following information about brokerage services to prospective buyers, tenants, sellers and landlords.

TYPES OF REAL ESTATE LICENSE HOLDERS:

A BROKER is responsible for all brokerage activities, including acts performed by sales agents sponsored by the broker.

A SALES AGENT must be sponsored by a broker and works with clients on behalf of the broker.

A BROKER'S MINIMUM DUTIES REQUIRED BY LAW (A client is the person or party that the broker represents):

- Put the interests of the client above all others, including the broker's own interests;
- Inform the client of any material information about the property or transaction received by the broker;
- Answer the client's questions and present any offer to or counter-offer from the client; and
- Treat all parties to a real estate transaction honestly and fairly.

A LICENSE HOLDER CAN REPRESENT A PARTY IN A REAL ESTATE TRANSACTION:

AS AGENT FOR OWNER (SELLER/LANDLORD): The broker becomes the property owner's agent through an agreement with the owner, usually in a written listing to sell or property management agreement. An owner's agent must perform the broker's minimum duties above and must inform the owner of any material information about the property or transaction known by the agent, including information disclosed to the agent or subagent by the buyer or buyer's agent.

AS AGENT FOR BUYER/TENANT: The broker becomes the buyer/tenant's agent by agreeing to represent the buyer, usually through a written representation agreement. A buyer's agent must perform the broker's minimum duties above and must inform the buyer of any material information about the property or transaction known by the agent, including information disclosed to the agent by the seller or seller's agent.

AS AGENT FOR BOTH - INTERMEDIARY: To act as an intermediary between the parties the broker must first obtain the written agreement of each party to the transaction. The written agreement must state who will pay the broker and, in conspicuous bold or underlined print, set forth the broker's obligations as an intermediary. A broker who acts as an intermediary:

- Must treat all parties to the transaction impartially and fairly;
- May, with the parties' written consent, appoint a different license holder associated with the broker to each party (owner and buyer) to communicate with, provide opinions and advice to, and carry out the instructions of each party to the transaction.
- Must not, unless specifically authorized in writing to do so by the party, disclose:
 - that the owner will accept a price less than the written asking price;
 - that the buyer/tenant will pay a price greater than the price submitted in a written offer; and
 - any confidential information or any other information that a party specifically instructs the broker in writing not to disclose, unless required to do so by law.

AS SUBAGENT: A license holder acts as a subagent when aiding a buyer in a transaction without an agreement to represent the buyer. A subagent can assist the buyer but does not represent the buyer and must place the interests of the owner first.

TO AVOID DISPUTES, ALL AGREEMENTS BETWEEN YOU AND A BROKER SHOULD BE IN WRITING AND CLEARLY ESTABLISH:

- The broker's duties and responsibilities to you, and your obligations under the representation agreement.
- Who will pay the broker for services provided to you, when payment will be made and how the payment will be calculated.

LICENSE HOLDER CONTACT INFORMATION: This notice is being provided for information purposes. It does not create an obligation for you to use the broker's services. Please acknowledge receipt of this notice below and retain a copy for your records.



**Center Commercial
Real Estate Services**

Gregory S. Williams
Broker

519334
License #

Buyer/Tenant

Date

Seller/Landlord

Date

License No. 519334

Gregory S. Williams (Broker)

Ph: 281-386-8045

greg@ccreservices.com